



MODULAR EGG WORKSPACE

Because Rome wasn't built in a day either, you should take the time to customise your outdoor kitchen 100% as well. Do you have a Big Green Egg Large or XLarge perhaps with a MiniMax alongside it? Begin with the framework and slowly expand it with Expansion Frames, Inserts and other Add-ons. Let's make it bigger!

Exclusive Big Green Egg Design



Options table insert

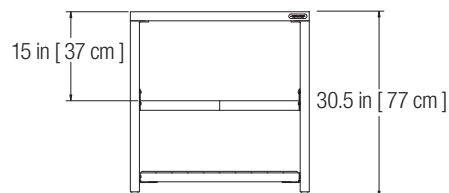
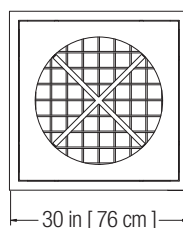


The new Modular EGG Workspace is a kind of Lego for adults. It is designed in such a way that all the components can be combined and you can continue to expand.

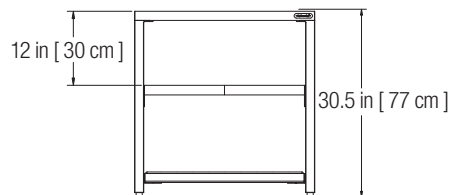
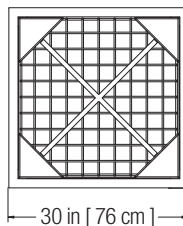
If you want a large work surface, this modular system is just as versatile as the EGG itself. The configuration or style of your outdoor workspace can also be adapted to meet your taste and requirements.



EGG Frame



EGG Frame





MODULAR EGG WORKSPACE



L



XL

EGG Frame

Start with the base: the EGG Frame. This includes a stainless steel grid level, hooks for your tools and 4 table leg levellers to stabilize the system on irregular surfaces. The top and legs are made of aluminium. To provide extra strength, the lower shelf frame and crossing beams are made of steel. You can also attach 10 cm castors underneath the legs. The dimensions of the EGG Frame are 76(w) x 76(d) x 77(h) cm. The EGG Frame is available for the models Large and XLarge.

EGG Frame - Large

Item code: 120212

Price: € 429,- (RRP excl. VAT)

Distributors discount: 50%

EGG Frame - XLarge

Item code: 120229

Price: € 429,00 (RRP excl. VAT)

Distributors discount: 50%

- Includes one EGG Frame, Stainless steel grid insert and Tool hooks
- 4 levellers are included, legs also accept 10 cm Caster kit
- The lower shelf frame and crossing beams are made of steel for extra strength
- Aluminum top frame and legs, if the powder coating scratches the frame remains rust free

Expansion Frame

If you EGG regularly and are short on workspace, expand your working area using Expansion Frames, which you can embellish with all kinds of beautiful intermediate layers (inserts). Aside from the frame itself, it contains a Connector Pack (see chapter Add-Ons) and 4 levellers. Decide for yourself what intermediate layers you want to add. You can also attach 10 cm castors underneath the legs.



Expansion Frame

Item code: 120236

Price: € 249,00 (RRP excl. VAT)

Distributors discount: 50%

- Includes one Expansion Frame and Connector Pack
- 4 levellers are included, legs also accept 10 cm Caster kit
- The lower and middle shelf frames are made of steel for extra strength
- Aluminum top frame and legs, if the powder coating scratches the frame remains rust free

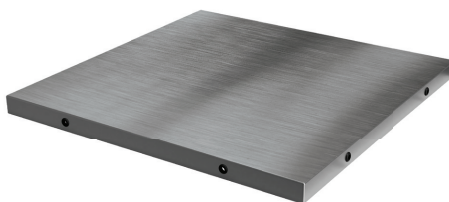
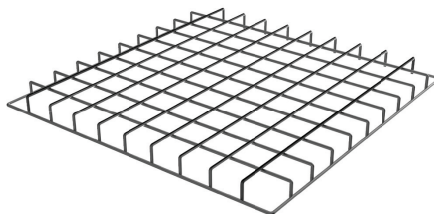


MODULAR EGG WORKSPACE



Expansion Frame Inserts

All inserts have the same dimensions, allowing you to organise your workspace to your own requirements and style. Stainless steel below and Acacia above? It's up to you. You can choose from a stainless steel grid insert, a stainless steel insert or an acacia insert. Too much choice? You can always switch after a while.



Stainless Steel Grid Insert

Item code: 120243

Price: € 119,00 (RRP excl. VAT)

Distributors discount: 50%

Made of 304 stainless steel

Can be inserted face up for holding smaller items or face down which is easier to slide baking stone and convEGGtor out.

Stainless Steel Insert

Item code: 120274

Price: € 299,00 (RRP excl. VAT)

Distributors discount: 50%

Made of 304 stainless steel

Silicone grommets dampen metal contact between insert and frame

Acacia Wood Insert

Item code: 120250

Price: € 94,00 (RRP excl. VAT)

Distributors discount: 50%

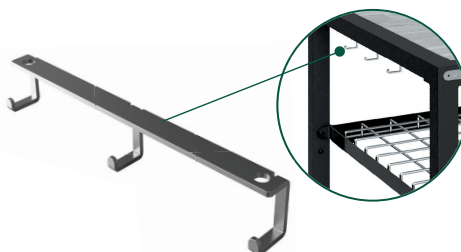
Made of solid acacia wood

Designed for outdoor use using slats and galvanized screws

Add-Ons:

Connector Pack, Caster Kit and Tool Hooks

You can expand your workspace by using the Connector Pack, for instance, which you can use to attach your EGG Frame to your Expansion Frames. The Caster Kit contains two castors (1 locking) that you can use to raise your workspace 10 cm, as well as making it more mobile. And the Tool Hooks is a stainless steel rack with three hooks that you can attach to your frames, which means you have all your tools at hand. There are also matching wooden screws especially for the Acacia tables. Let your creativity run wild!



Caster Kit

Item code: 120410

Price: € 36,25 (RRP excl. VAT)

Distributors discount: 55%

Works with Modular EGG workspace, Acacia tables, IntEGGated Nest+Handler. If an EGG Frame and Expansion Frame are combined, 6 casters are needed. 4 should be placed under the EGG Frame to carry the weight of the EGG.

Tool Hooks

Item code: 120281

Price: € 24,95 (RRP excl. VAT)

Distributors discount: 50%

- Can be inserted on any side of the EGG frame
- Extra set of Tool Hooks includes wood screws for possible use on Acacia tables

Connector Pack Modular Frames

Item code: 120298

Price: € 13,50 (RRP excl. VAT)

Distributors discount: 50%

Hardware Pack Frames

Item code: 120304

Price: € 16,00 (RRP excl. VAT)

Distributors discount: 50%

This is a replacement kit